



Cut along outer line  
after template halves  
are assembled

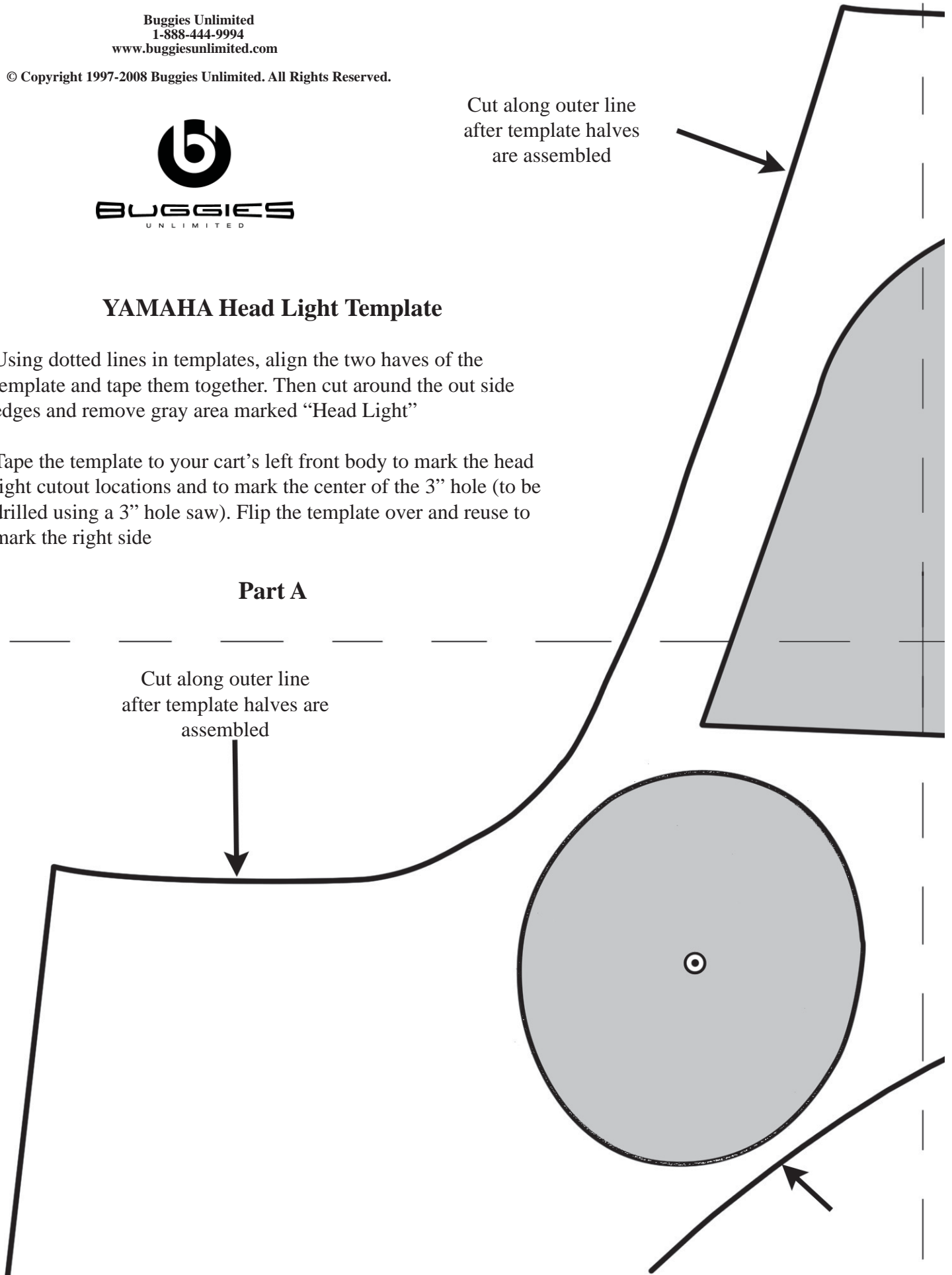
## YAMAHA Head Light Template

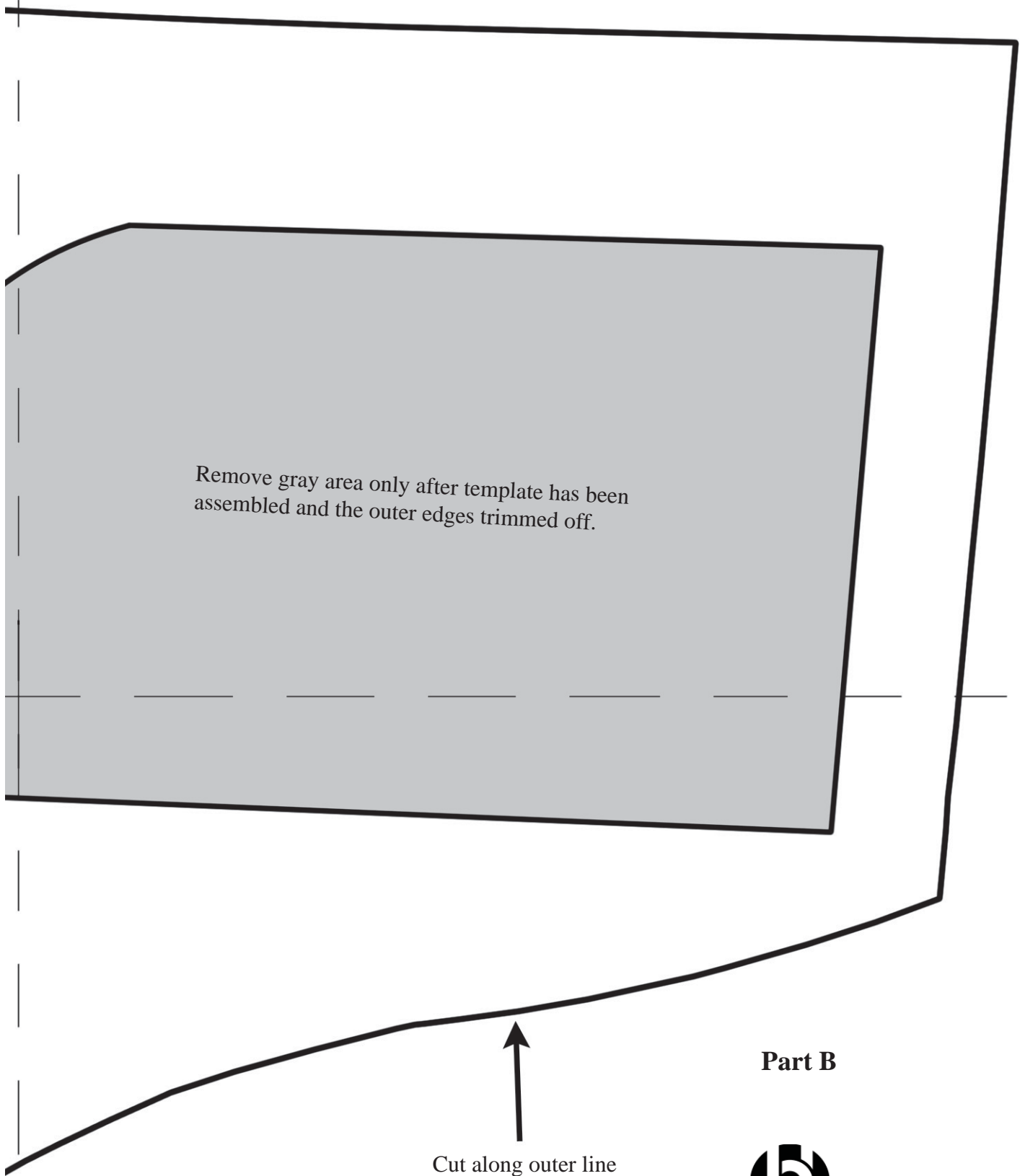
Using dotted lines in templates, align the two halves of the template and tape them together. Then cut around the out side edges and remove gray area marked "Head Light"

Tape the template to your cart's left front body to mark the head light cutout locations and to mark the center of the 3" hole (to be drilled using a 3" hole saw). Flip the template over and reuse to mark the right side

### Part A

Cut along outer line  
after template halves are  
assembled





Remove gray area only after template has been assembled and the outer edges trimmed off.

**Part B**

Cut along outer line  
after template halves are  
assembled

Cut along this line  
to assemble template



Buggies Unlimited  
1-888-444-9994  
www.buggiesunlimited.com